



## KR TrayGuide

Protect your army with the best tray and case system by KR  
Custom create your own trays and case for your army using the KR tray system  
Choose from the widest range of custom trays

All pictures show trays relative to a standard sized Navara Cases (1 NRU), 1 standard KR Unit  
Pre-selected Sets (Custom)



### 120N3HS

1 NRU  
120 taller troops on 25mm bases. 120 compartments 35mm deep, each 50mm x 25mm. Half size trays for added flexibility holds:  
120 taller troops on 25mm bases. 120 compartments 35mm deep, each 50mm x 25mm. Half size trays for added flexibility  
(20N3H, NVPADT)



### 160N4HS

1 NRU  
160 taller troops on 25mm bases. 160 compartments 25mm deep, each 50mm x 25mm. Half size trays for added flexibility holds:  
160 taller troops on 25mm bases. 160 compartments 25mm deep, each 50mm x 25mm. Half size trays for added flexibility  
(20N4H, NVPADT)



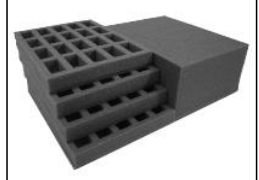
### 60N3HSH

0.5 NRU  
60 taller troops on 25mm bases. 60 compartments 35mm deep, each 50mm x 25mm holds:  
60 taller troops on 25mm bases. 60 compartments 35mm deep, each 50mm x 25mm  
(20N3H, NVPADH)



### 80N4HSH

0.5 NRU  
80 taller troops on 25mm bases. 80 compartments 25mm deep, each 50mm x 25mm holds:  
80 taller troops on 25mm bases. 80 compartments 25mm deep, each 50mm x 25mm  
(20N4H, NVPADH)



### NPP10S-N

1 NRU  
80 taller troops on 25mm bases plus a variety of models, monsters and vehicles. Pick&pluck tray 110mm deep with a grid of 2cm pick&pluck removable squares, troop tray compartments 50mm x 25mm, <strong>25mm deep.</strong> holds:  
80 taller troops on 25mm bases plus a variety of models, monsters and vehicles. Pick&pluck tray 110mm deep, 20mm pick&pluck cells, troop tray compartments 50mm x 25mm, <strong>25mm deep.</strong>  
(20N4H, NPP1H, NVPADT)

[www.krmulticase.com](http://www.krmulticase.com)

KR - soft foam for miniatures, hard cases for soft foam



## KR TrayGuide

Protect your army with the best tray and case system by KR  
Custom create your own trays and case for your army using the KR tray system  
Choose from the widest range of custom trays

All pictures show trays relative to a standard sized Navara Cases (1 NRU), 1 standard KR Unit  
Pre-selected Sets (Custom)



### NPP10S-SM60

1 NRU  
100 troops on 25mm bases with dynamic poses up to 40mm tall, plus a variety of models, monsters and vehicles. Pick&pluck tray 110mm deep with a grid of 2cm pick&pluck removable squares, troop tray compartments 40mm x 25mm, <strong>25mm deep </strong>. holds: 100 troops on 25mm bases with dynamic poses up to 40mm tall, plus a variety of models, monsters and vehicles. Pick&pluck tray 110mm deep, 20mm pick&pluck cells, troop tray compartments 40mm x 25mm, <strong>25mm deep </strong>.  
(25SM60, NPP1H, NVPADT)



### NPP7S-N

1 NRU  
60 taller troops on 25mm bases plus a variety of models, monsters and vehicles. Pick&pluck tray 110mm deep with a grid of 2cm pick&pluck removable squares, troop tray compartments 50mm x 25mm, <strong>35mm deep </strong> holds: 60 taller troops on 25mm bases plus a variety of models, monsters and vehicles. Pick&pluck tray 110mm deep, 20mm pick&pluck cells, troop tray compartments 50mm x 25mm, <strong>35mm deep </strong>  
(20N3H, NPP1H, NVPADT)



### NVMAGS1

1 NRU  
<strong>Magnetic Trayset each 35mm deep</strong><br>Full width trays each 380mm x 255mm x 35mm, ideal for magnetised base troops up to 35mm tall. Magnetised area is 335mm x 205mm holds: <strong>Magnetic Trayset each 35mm deep </strong><br>Full width trays each 380mm x 255mm x 35mm, ideal for magnetised base troops up to 35mm tall. Magnetised area is 335mm x 205mm  
(NVMAG1, NVPADT)



### NVMAGS2

1 NRU  
<strong>Magnetic Trayset each 55mm deep</strong><br>Full width trays 380mm x 255mm x 55mm, ideal for magnetised base troops up to 55mm tall. Magnetised area is 335mm x 205mm holds: <strong>Magnetic Trayset each 55mm deep </strong><br>Full width trays 380mm x 255mm x 55mm, ideal for magnetised base troops up to 55mm tall. Magnetised area is 335mm x 205mm  
(NVMAG2, NVPADT)



### NVMAGS3

1 NRU  
<strong>Magnetic Trayset 80mm and 35mm deep</strong><br>Full width trays 380mm x 255mm. The deep tray is ideal for magnetised base medium size vehicles and monsters up to 80mm tall and the shallower tray is ideal for magnetised base troops up to 35mm tall. Magnetised area is 335mm x 205mm holds: <strong>Magnetic Trayset 80mm and 35mm deep </strong><br>Full width trays 380mm x 255mm. The deep tray is ideal for magnetised base medium size vehicles and monsters up to 80mm tall and the shallower tray is ideal for magnetised base troops up to 35mm tall. Magnetised area is 335mm x 205mm  
(NVMAG1, NVMAG3, NVPADT)

[www.krmulticase.com](http://www.krmulticase.com)

KR - soft foam for miniatures, hard cases for soft foam



## KR TrayGuide

Protect your army with the best tray and case system by KR  
Custom create your own trays and case for your army using the KR tray system  
Choose from the widest range of custom trays

All pictures show trays relative to a standard sized Navara Cases (1 NRU), 1 standard KR Unit  
Pre-selected Sets (Custom)



### NVMAGS4

1 NRU  
**Magnetic Trayset 110mm deep**  
Full width tray 380mm x 255mm. This deep tray is ideal for magnetised base large vehicles and monsters up to 110mm tall. Magnetised area is 335mm x 205mm holds:  
**Magnetic Trayset 110mm deep**  
Full width tray 380mm x 255mm. This deep tray is ideal for magnetised base large vehicles and monsters up to 110mm tall. Magnetised area is 335mm x 205mm (NVMAG4, NVPADT)



### NVMAGS6

1 NRU  
**Magnetic and troop Trayset 80mm deep with 40 troop tray**  
Full width trays 380mm x 255mm. The deep tray is ideal for magnetised base medium size vehicles and monsters up to 80mm tall and the shallower tray is ideal for troops on 25mm bases up to 50mm tall. Magnetised area is 335mm x 205mm holds:  
**Magnetic and troop Trayset 80mm deep with 40 troop tray**  
Full width trays 380mm x 255mm. The deep tray is ideal for magnetised base medium size vehicles and monsters up to 80mm tall and the shallower tray is ideal for troops on 25mm bases up to 50mm tall. Magnetised area is 335mm x 205mm (40N3T, NVMAG3, NVPADT)

[www.krmulticase.com](http://www.krmulticase.com)

KR - soft foam for miniatures, hard cases for soft foam



## KR TrayGuide

Protect your army with the best tray and case system by KR  
Custom create your own trays and case for your army using the KR tray system  
Choose from the widest range of custom trays

All pictures show trays relative to a standard sized Navara Cases (1 NRU), 1 standard KR Unit

### Half Width Trays (Custom)

23 mm deep tray compartments



#### 20N4H

1/4 depth tray - 23mm deep  
Holds: 20 infantry stands on 50mm x 25mm bases (Short)



#### NPP4H

1/4 depth tray - 23mm deep  
Holds: 12 short infantry on 45mm x 40mm bases OR 12 short infantry on 40mm diameter round bases.



#### NPP4H

1/4 depth tray - 23mm deep  
Holds: 6 short infantry on 20mm x 100mm bases

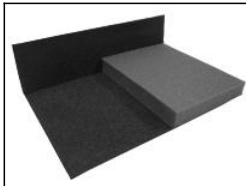
### Half Width Trays (Custom)

32 mm deep tray compartments



#### 20N3H

1/3 depth tray - 32mm deep  
Holds: 20 infantry stands on 50mm x 25mm bases (tall)



#### NPP3H

1/3 depth tray - 32mm deep  
Holds: 12 tall infantry on 45mm x 40mm bases OR 12 tall infantry on 40mm diameter round bases.

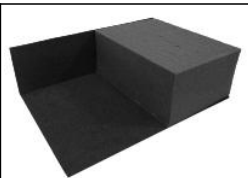


#### NPP3H

1/3 depth tray - 32mm deep  
Holds: 6 tall infantry on 20mm x 100mm bases

### Half Width Trays (Custom)

110 mm deep tray compartments



#### NPP1H

1 depth tray - 110mm deep  
Holds: 2 Large Martian tripods

[www.krmulticase.com](http://www.krmulticase.com)

KR - soft foam for miniatures, hard cases for soft foam



## KR TrayGuide

Protect your army with the best tray and case system by KR  
Custom create your own trays and case for your army using the KR tray system  
Choose from the widest range of custom trays

All pictures show trays relative to a standard sized Navara Cases (1 NRU), 1 standard KR Unit

Full Width Trays (Custom)  
mm deep tray compartments



### FILLERPAD

1/12 depth tray - mm deep  
Holds: To be used to fit 5 trays for 32mm diameter bases into the Large Card Case and carry 180 figures. Put this filler pad in first!

Full Width Trays (Custom)  
32 mm deep tray compartments



### NVMAG1

1/3 depth tray - 32mm deep  
Holds: **Magnetic Tray 35mm deep**  
Full width tray 380mm x 255mm, ideal for magnetised base troops up to 35mm tall. Fully stackable and can be combined with regular troop trays. Magnetised area is 335mm x 205mm

[www.krmulticase.com](http://www.krmulticase.com)

KR - soft foam for miniatures, hard cases for soft foam



## KR TrayGuide

Protect your army with the best tray and case system by KR  
Custom create your own trays and case for your army using the KR tray system  
Choose from the widest range of custom trays

All pictures show trays relative to a standard sized Navara Cases (1 NRU), 1 standard KR Unit

### Full Width Trays (Custom)

51 mm deep tray compartments



#### NVMAG2

1/2 depth tray - 51mm deep  
Holds: **Magnetic Tray 55mm deep**  
Full width tray 380mm x 255mm, ideal for magnetised base troops up to 55mm tall. Fully stackable and can be combined with regular troop trays. Magnetised area is 335mm x 205mm

### Full Width Trays (Custom)

70 mm deep tray compartments



#### NVMAG3

2/3 depth tray - 70mm deep  
Holds: **Magnetic Tray 80mm deep**  
Full width tray 380mm x 255mm, ideal for magnetised base medium size vehicles and monsters up to 80mm tall. Fully stackable and can be combined with regular troop trays. Magnetised area is 335mm x 205mm

[www.krmulticase.com](http://www.krmulticase.com)

KR - soft foam for miniatures, hard cases for soft foam



## KR TrayGuide

Protect your army with the best tray and case system by KR  
Custom create your own trays and case for your army using the KR tray system  
Choose from the widest range of custom trays

All pictures show trays relative to a standard sized Navara Cases (1 NRU), 1 standard KR Unit

### Full Width Trays (Custom)

110 mm deep tray compartments



#### NVMAG4

110mm deep  
Holds: **Magnetic Tray 110mm deep**  
Full width tray 380mm x 255mm, ideal for magnetised base large vehicles and monsters up to 110mm tall. Fully stackable and can be combined with regular troop trays. Magnetised area is 335mm x 205mm

[www.krmulticase.com](http://www.krmulticase.com)

KR - soft foam for miniatures, hard cases for soft foam